




ACCESSORIES

CASH ALLOWANCES FOR BUSINESS OWNERS

2018 BUSINESS CHOICE PROGRAM



BUSINESS CHOICE OFFERS
FLEXIBLE SOLUTIONS FOR YOUR BUSINESS

About this guide 

PROGRAM OVERVIEW

SALES PERSONNEL
SPIFF POINT SCALE

ELIGIBLE ACCESSORIES

RECOMMENDED PACKAGES

BUSINESS CHOICE PORTAL

HOME

ABOUT THIS GUIDE

PROGRAM OVERVIEW

SALES PERSONNEL
SPIFF POINT SCALE

ELIGIBLE ACCESSORIES

RECOMMENDED PACKAGES

BUSINESS CHOICE PORTAL

ABOUT THIS GUIDE

Use this interactive guide to locate all the information you'll need to make the most of the 2018 Chevrolet Business Choice program. Here, you'll find:

- The Business Choice program quick-reference overview
- Business Choice incentive point scale and rules
- A list of eligible accessories categories
- Video links to selected eligible accessories
- Top-selling accessories and recommended accessories packages
- Enhancements to the Business Choice portal that increase the user's ability to identify eligible accessories with the VIN Lookup Tool



ACCESSORIES

HOME

ABOUT THIS GUIDE

PROGRAM OVERVIEW

Am I Eligible for Business Choice?

Which vehicles are eligible?

Business Choice Chevrolet Cash
Accessory cash allowance offers

Business Choice Resources

SALES PERSONNEL
SPIFF POINT SCALE

ELIGIBLE ACCESSORIES

RECOMMENDED PACKAGES

BUSINESS CHOICE PORTAL



ACCESSORIES

CHEVROLET PROGRAM OVERVIEW

PROGRAM DATES:

January 3, 2018 – January 2, 2019

PROGRAM NUMBERS:

18-36A Adrian Steel Ship-Through

18-36B Accessories Cash Allowance

18-36C Upfit Cash Allowance

ELIGIBLE DELIVERY TYPES

Use the following delivery codes to ensure your Business Choice claim is processed successfully:

- 018 Retail Business Organization Purchase
- 029 Retail Business Organization Lease
- 014 Fleet Leasing Company
- 035 Fleet Purchase Business Organization
- 036 Fleet Purchase Non-Federal Organization



HOME

ABOUT THIS GUIDE

PROGRAM OVERVIEW

► Am I Eligible for Business Choice?

Which vehicles are eligible?

Business Choice Chevrolet Cash
Accessory cash allowance offers

Business Choice Resources

SALES PERSONNEL
SPIFF POINT SCALE

ELIGIBLE ACCESSORIES

RECOMMENDED PACKAGES

BUSINESS CHOICE PORTAL

AM I ELIGIBLE FOR BUSINESS CHOICE?

Business Choice customers will need to answer “yes” to the following questions:

1. Are you a business owner?
2. Is the vehicle used in the day-to-day operation of your business and not solely for personal/non-business-related transportation purposes?

Note: Eligible business documents must be used to verify business ownership. Documents must be active or dated within the last 12 months. Examples of eligible documents are listed below:

- GM Fleet Account Number (FAN)
- Sales Tax License
- State Business License of State/Federal Business Tax ID Certificate
- Municipalities (in lieu of Bid Assistance, vehicle must be in the name of the municipality)
- Municipal Business License
- Schedule C (Form 1040) or Schedule F (Form 1040—farmers)
- Crop or Livestock Insurance
- Federal Land Use Restriction and/or Federal Land Grant Subsidiary Documentation
- Commercial General Liability Insurance Policy/Public Liability Insurance Policy and/or Workmen’s Compensation – Insurance Policy
- State or Federal Authorized Business Website
- Pocket List of Railroad Officials Guide (Only eligible when Railroad Operators Incentive is not used)
- Timber Registration Number
- Farmer’s General Liability Insurance
- Articles of Incorporation
- Tax Form 1120-S
- Tax Form 1065



ACCESSORIES

BUSINESS CHOICE OFFERS
FLEXIBLE SOLUTIONS FOR YOUR BUSINESS



HOME

ABOUT THIS GUIDE

PROGRAM OVERVIEW

Am I Eligible for Business Choice?

► Which vehicles are eligible?

Business Choice Chevrolet Cash
Accessory cash allowance offers

Business Choice Resources

SALES PERSONNEL
SPIFF POINT SCALE

ELIGIBLE ACCESSORIES

RECOMMENDED PACKAGES

BUSINESS CHOICE PORTAL



ACCESSORIES

WHICH VEHICLES ARE ELIGIBLE?


2017-18 CHEVROLET TRUCKS AND VANS, INCLUDING:

Colorado
Silverado 1500
Silverado 2500HD

Silverado 3500HD
Express Passenger Vans
Express Cargo Vans* and City Express*

*Accessory CORE vehicle; business ownership documentation not required.



Expanded Eligibility Info 

Am I Eligible for Business Choice?

► Which vehicles are eligible?

Business Choice Chevrolet Cash
Accessory cash allowance offers

Business Choice Resources

SALES PERSONNEL
SPIFF POINT SCALE

ELIGIBLE ACCESSORIES

RECOMMENDED PACKAGES

BUSINESS CHOICE PORTAL

WHICH VEHICLES ARE ELIGIBLE?

2018 BUSINESS CHOICE PROGRAM

VEHICLES ¹	PLUS	CHOOSE ONE			
		OPTION 1 ACCESSORY CASH ALLOWANCE ²	OPTION 2 UPFIT CASH ALLOWANCE ^{2,3} OR W/SNOW PLOW PREP PACKAGE ⁴	OPTION 3 ADRIAN STEEL SHIP-THRU ⁶	
CITY EXPRESS		\$400	\$350		
EXPRESS PASSENGER VAN	+	\$400	\$200		
EXPRESS CARGO VAN	+	\$500–\$1,200 ⁵	\$500–\$1,200 ⁵		BIN PACKAGE ⁶ (VALUED AT \$2,327)
EXPRESS CUTAWAY VAN	+		\$500–\$1,200 ⁵		
COLORADO (EXCLUDES 2SA)	+	\$400	\$200		
COLORADO w/BOX DELETE (ZW9) OR BOX REMOVAL	+		\$200		
SILVERADO 1500	+	\$400	\$200	\$200	
SILVERADO 1500 w/SNOW PLOW ⁷	+		\$200	\$400	
SILVERADO 1500 w/BOX DELETE (ZW9) OR BOX REMOVAL	+		\$750	\$750	
SILVERADO 2500HD/3500HD	+	\$1,000	\$500	\$500	
SILVERADO 2500HD/3500HD w/SNOW PLOW ⁷	+		\$500	\$1,000	
SILVERADO 2500HD/3500HD w/BOX DELETE (ZW9) OR BOX REMOVAL	+		\$750	\$1,000	
SILVERADO 3500HD CHASSIS CAB	+		\$750	\$1,000	
LOW CAB FORWARD			\$1,000		

¹ 2018 GM BUSINESS CHOICE PROGRAM REQUIREMENTS: The 2018 GM Business Choice Program is valid from January 3, 2018, through January 2, 2019. Customer must purchase or lease their vehicle during the program period and be prepared to provide proof of business ownership. Vehicle must be used in the day-to-day operations of the business and not solely for transportation purposes. This program may not be compatible with other offers or incentive programs. Consult with your Chevrolet dealer for program compatibility and other restrictions. For complete program requirements, including information regarding offers, vehicles, equipment, options, warranties, and ordering, consult your Chevrolet dealer.

² Eligible purchases must be equal to or greater than the amount of the cash allowance. Not eligible on Associated Accessories from third-party independent suppliers. Not available with some other offers. Take delivery by 1/2/2019. See dealer for details.

³ To qualify, vehicle must be used in the day-to-day operations of your business and not solely for personal/non-business-related transportation purposes. Must provide proof of business ownership. Not available with some other offers. For complete program requirements, including information regarding offers, vehicles, equipment, options, warranties, and ordering, consult your Chevrolet dealer. Take delivery by 1/2/2019.

⁴ Requires available Snow Plow Prep Package (VYU). Not available with some other offers. Take delivery by 1/2/2019. See dealer for details.

⁵ Requires \$500 minimum purchase. Cash Allowance will be equal to the amount spent up to \$1,200. Not eligible on Associated Accessories from third-party independent suppliers. Not available with some other offers. Take delivery by 1/2/2019. See dealer for details.

⁶ Adrian Steel van equipment is warranted by Adrian Steel to be free from defects in material and workmanship, under normal use and service, for a period of 3 years or 36,000 miles, whichever occurs first, from the date of delivery to the original retail purchaser when installed by an authorized Adrian Steel distributor. Adrian Steel is a registered trademark of Adrian Steel. Invoice will include published ship-thru fee. See dealer for details. Take delivery by 1/2/2019.

⁷ Snow Plow Upfit cash allowance is valid towards the purchase of a new snow plow or transfer of an existing snow plow. Take delivery by 1/2/2019.



HOME

ABOUT THIS GUIDE

PROGRAM OVERVIEW

Am I Eligible for Business Choice?

Which vehicles are eligible?

► Business Choice Chevrolet Cash
Accessory cash allowance offers

Business Choice Resources

SALES PERSONNEL
SPIFF POINT SCALE

ELIGIBLE ACCESSORIES

RECOMMENDED PACKAGES

BUSINESS CHOICE PORTAL

BUSINESS CHOICE CHEVROLET CASH ACCESSORY CASH ALLOWANCE OFFERS



2017-18 TRUCKS

Silverado 1500 and Colorado	\$400 Cash Allowance on eligible Chevrolet Accessories ^{1,2}
Silverado 2500HD and Silverado 3500HD	\$1,000 Cash Allowance on eligible Chevrolet Accessories ^{1,2}

2017-18 VANS

Express (Passenger) and City Express	\$400 Cash Allowance on eligible Chevrolet Accessories ^{1,2}
Express (Cargo)	\$1,200 Cash Allowance on eligible Chevrolet Accessories ^{1,2} Requires a minimum spend of \$500
	OR
	\$1,200 Cash Allowance on a combination of eligible Chevrolet Accessories and Upfitter Additions ^{1,2} Requires a minimum spend of \$500

NEW!

¹ For Colorado, Silverado 1500, Silverado 2500HD, Silverado 3500HD, Express Passenger Van and City Express Van: Cash Allowance applies to eligible Chevrolet commercial accessories only. For Express Cargo Van, (i) Cash Allowance may be applied to eligible Chevrolet commercial accessories, a combination of eligible Chevrolet commercial accessories and eligible commercial upfitter additions including labor and installation associated with upfitter additions only, and (ii) Customers must spend at least \$500 to be eligible for matching Cash Allowance up to \$1,200. Not valid with certain other offers. See your Chevrolet Dealer for complete Program requirements. Program is valid from January 3, 2018-January 2, 2019. Take delivery by 1/2/2019.

² Most Chevrolet Parts and Accessories sold and installed on a Chevrolet vehicle by a Chevrolet Dealer or a Chevrolet-approved Accessory Distributor/Installer (ADI) before delivery to the customer are covered under the applicable portion (Bumper-to-Bumper, Powertrain, etc.) of the New Vehicle Limited Warranty. If Chevrolet Accessories are installed after vehicle delivery, or are replaced under the New Vehicle Limited Warranty, they will be covered, parts and labor, for the longer of the following: a) 12 months/12,000 miles (whichever comes first), or b) the balance of the applicable portion of the New Vehicle Limited Warranty. Chevrolet Parts sold over the counter, or those not requiring installation, will continue to receive the standard GM Dealer Parts Warranty of 12 months from the date of purchase, parts only, regardless of miles. Does not apply to Associated Accessories. See your dealer for details. Some vehicles are shown with equipment from an independent supplier. GM Licensed and Associated Accessories are covered under the accessory-specific manufacturer's warranty and are not warranted by GM or its dealers. GM is not responsible for the safety or quality of independent supplier alterations. Pictured gear and supplies not included. Please see your dealer for details.



ACCESSORIES

Am I Eligible for Business Choice?

Which vehicles are eligible?

Business Choice Chevrolet Cash
Accessory cash allowance offers

► [Business Choice Resources](#)

SALES PERSONNEL
SPIFF POINT SCALE

ELIGIBLE ACCESSORIES

RECOMMENDED PACKAGES

BUSINESS CHOICE PORTAL



ACCESSORIES

BUSINESS CHOICE RESOURCES

Additional Reference Material:

Commercial-Grade Accessories Brochure

Featuring an extensive lineup of “Ready for Work” accessories, the Commercial-Grade Accessories Brochure offers accessories descriptions, part numbers and MSRPs. A four-page Business Choice insert helps to put the program in front of business-owner customers as they browse available accessories. Access it on: [AIC > Home > Sales/Marketing > Programs > Business Choice](#)

Business Choice Desk Mat

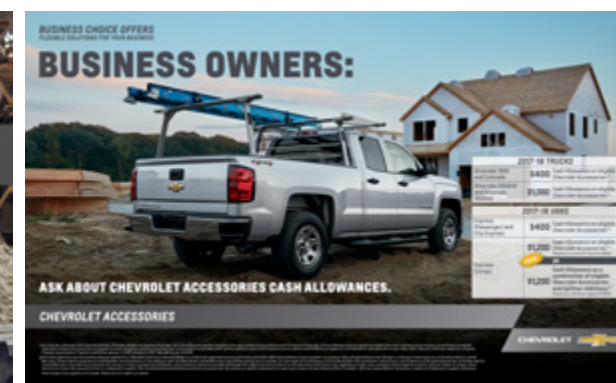
Featuring a stay-put adhesive backing, the Business Choice Desk Mat keeps Accessories Cash Allowance Offers at your fingertips for on-the-spot customer presentations.

Incentive Point Scale Reference

This at-a-glance-reference to the GM **earnPOWER** Incentive Point Scale promotes additional accessory sales by providing the incentive point scale payout based on the total MSRP sold. Access it on: [AIC > Home > Sales/Marketing > Programs > Business Choice](#)

Online Resource

Program details are also available online. Visit: gmfleet.com/chevybusinesschoice and chevrolet.com/business-choice-offers



BUSINESS CHOICE OFFERS
FLEXIBLE SOLUTIONS FOR YOUR BUSINESS

REV UP YOUR **earnPOWER AWARDS!**

RECEIVE GM **earnPOWER** POINTS ON ALL ACCESSORIES SOLD WITHIN THE 2018 BUSINESS CHOICE PROGRAM.
Official Program Period for 2017-2018: January 1, 2018 - January 3, 2019

Accessory MSRP	Cash Allowance	2017-18 TRUCKS	2017-18 VANS
\$400	\$400	Cash Allowance on eligible Chevrolet Accessories*	Cash Allowance on eligible Chevrolet Accessories*
\$1,000	\$1,000	Cash Allowance on eligible Chevrolet Accessories*	Cash Allowance on eligible Chevrolet Accessories*
\$400	\$400	Cash Allowance on eligible Chevrolet Accessories*	Cash Allowance on eligible Chevrolet Accessories*
\$1,000	\$1,000	Cash Allowance on eligible Chevrolet Accessories*	Cash Allowance on eligible Chevrolet Accessories*
\$400	\$400	Cash Allowance on eligible Chevrolet Accessories*	Cash Allowance on eligible Chevrolet Accessories*
\$1,000	\$1,000	Cash Allowance on eligible Chevrolet Accessories*	Cash Allowance on eligible Chevrolet Accessories*

2017-18 INCENTIVE POINT SCALE (BASED ON TOTAL PARTS MSRP)

Accessory MSRP	Points	Accessory MSRP	Points	Accessory MSRP	Points
\$0 - \$499	25	\$5,000 - \$5,499	100	\$10,000 - \$10,499	150
\$500 - \$499	50	\$5,500 - \$5,999	125	\$10,500 - \$10,999	175
\$500 - \$999	75	\$6,000 - \$6,499	150	\$11,000 - \$11,499	200
\$1,000 - \$1,499	100	\$6,500 - \$6,999	175	\$11,500 - \$11,999	225
\$1,500 - \$1,999	125	\$7,000 - \$7,499	200	\$12,000 - \$12,499	250
\$2,000 - \$2,499	150	\$7,500 - \$7,999	225	\$12,500 - \$12,999	300
\$2,500 - \$2,999	175	\$8,000 - \$8,499	250	\$13,000 - \$13,499	350
\$3,000 - \$3,499	200	\$8,500 - \$8,999	275	\$13,500 - \$13,999	400
\$3,500 - \$3,999	225	\$9,000 - \$9,499	300	\$14,000 - \$14,499	450
\$4,000 - \$4,499	250	\$9,500 - \$9,999	325	\$14,500 - \$14,999	500
\$4,500 - \$4,999	275	\$10,000 - \$10,499	350	\$15,000 - \$15,499	550
\$5,000 - \$5,499	300	\$10,500 - \$10,999	375	\$15,500 - \$15,999	600
\$5,500 - \$5,999	325	\$11,000 - \$11,499	400	\$16,000 - \$16,499	650
\$6,000 - \$6,499	350	\$11,500 - \$11,999	425	\$16,500 - \$16,999	700
\$6,500 - \$6,999	375	\$12,000 - \$12,499	450	\$17,000 - \$17,499	750
\$7,000 - \$7,499	400	\$12,500 - \$12,999	475	\$17,500 - \$17,999	800
\$7,500 - \$7,999	425	\$13,000 - \$13,499	500	\$18,000 - \$18,499	850
\$8,000 - \$8,499	450	\$13,500 - \$13,999	525	\$18,500 - \$18,999	900
\$8,500 - \$8,999	475	\$14,000 - \$14,499	550	\$19,000 - \$19,499	950
\$9,000 - \$9,499	500	\$14,500 - \$14,999	575	\$19,500 - \$19,999	1,000
\$9,500 - \$9,999	525	\$15,000 - \$15,499	600	\$20,000 - \$20,499	1,050
\$10,000 - \$10,499	550	\$15,500 - \$15,999	625	\$20,500 - \$20,999	1,100
\$10,500 - \$10,999	575	\$16,000 - \$16,499	650	\$21,000 - \$21,499	1,150
\$11,000 - \$11,499	600	\$16,500 - \$16,999	675	\$21,500 - \$21,999	1,200
\$11,500 - \$11,999	625	\$17,000 - \$17,499	700	\$22,000 - \$22,499	1,250
\$12,000 - \$12,499	650	\$17,500 - \$17,999	725	\$22,500 - \$22,999	1,300
\$12,500 - \$12,999	675	\$18,000 - \$18,499	750	\$23,000 - \$23,499	1,350
\$13,000 - \$13,499	700	\$18,500 - \$18,999	775	\$23,500 - \$23,999	1,400
\$13,500 - \$13,999	725	\$19,000 - \$19,499	800	\$24,000 - \$24,499	1,450
\$14,000 - \$14,499	750	\$19,500 - \$19,999	825	\$24,500 - \$24,999	1,500
\$14,500 - \$14,999	775	\$20,000 - \$20,499	850	\$25,000 - \$25,499	1,550
\$15,000 - \$15,499	800	\$20,500 - \$20,999	875	\$25,500 - \$25,999	1,600
\$15,500 - \$15,999	825	\$21,000 - \$21,499	900	\$26,000 - \$26,499	1,650
\$16,000 - \$16,499	850	\$21,500 - \$21,999	925	\$26,500 - \$26,999	1,700
\$16,500 - \$16,999	875	\$22,000 - \$22,499	950	\$27,000 - \$27,499	1,750
\$17,000 - \$17,499	900	\$22,500 - \$22,999	975	\$27,500 - \$27,999	1,800
\$17,500 - \$17,999	925	\$23,000 - \$23,499	1,000	\$28,000 - \$28,499	1,850
\$18,000 - \$18,499	950	\$23,500 - \$23,999	1,025	\$28,500 - \$28,999	1,900
\$18,500 - \$18,999	975	\$24,000 - \$24,499	1,050	\$29,000 - \$29,499	1,950
\$19,000 - \$19,499	1,000	\$24,500 - \$24,999	1,075	\$29,500 - \$29,999	2,000
\$19,500 - \$19,999	1,025	\$25,000 - \$25,499	1,100	\$30,000 - \$30,499	2,050
\$20,000 - \$20,499	1,050	\$25,500 - \$25,999	1,125	\$30,500 - \$30,999	2,100
\$20,500 - \$20,999	1,075	\$26,000 - \$26,499	1,150	\$31,000 - \$31,499	2,150
\$21,000 - \$21,499	1,100	\$26,500 - \$26,999	1,175	\$31,500 - \$31,999	2,200
\$21,500 - \$21,999	1,125	\$27,000 - \$27,499	1,200	\$32,000 - \$32,499	2,250
\$22,000 - \$22,499	1,150	\$27,500 - \$27,999	1,225	\$32,500 - \$32,999	2,300
\$22,500 - \$22,999	1,175	\$28,000 - \$28,499	1,250	\$33,000 - \$33,499	2,350
\$23,000 - \$23,499	1,200	\$28,500 - \$28,999	1,275	\$33,500 - \$33,999	2,400
\$23,500 - \$23,999	1,225	\$29,000 - \$29,499	1,300	\$34,000 - \$34,499	2,450
\$24,000 - \$24,499	1,250	\$29,500 - \$29,999	1,325	\$34,500 - \$34,999	2,500
\$24,500 - \$24,999	1,275	\$30,000 - \$30,499	1,350	\$35,000 - \$35,499	2,550
\$25,000 - \$25,499	1,300	\$30,500 - \$30,999	1,375	\$35,500 - \$35,999	2,600
\$25,500 - \$25,999	1,325	\$31,000 - \$31,499	1,400	\$36,000 - \$36,499	2,650
\$26,000 - \$26,499	1,350	\$31,500 - \$31,999	1,425	\$36,500 - \$36,999	2,700
\$26,500 - \$26,999	1,375	\$32,000 - \$32,499	1,450	\$37,000 - \$37,499	2,750
\$27,000 - \$27,499	1,400	\$32,500 - \$32,999	1,475	\$37,500 - \$37,999	2,800
\$27,500 - \$27,999	1,425	\$33,000 - \$33,499	1,500	\$38,000 - \$38,499	2,850
\$28,000 - \$28,499	1,450	\$33,500 - \$33,999	1,525	\$38,500 - \$38,999	2,900
\$28,500 - \$28,999	1,475	\$34,000 - \$34,499	1,550	\$39,000 - \$39,499	2,950
\$29,000 - \$29,499	1,500	\$34,500 - \$34,999	1,575	\$39,500 - \$39,999	3,000
\$29,500 - \$29,999	1,525	\$35,000 - \$35,499	1,600	\$40,000 - \$40,499	3,050
\$30,000 - \$30,499	1,550	\$35,500 - \$35,999	1,625	\$40,500 - \$40,999	3,100
\$30,500 - \$30,999	1,575	\$36,000 - \$36,499	1,650	\$41,000 - \$41,499	3,150
\$31,000 - \$31,499	1,600	\$36,500 - \$36,999	1,675	\$41,500 - \$41,999	3,200
\$31,500 - \$31,999	1,625	\$37,000 - \$37,499	1,700	\$42,000 - \$42,499	3,250
\$32,000 - \$32,499	1,650	\$37,500 - \$37,999	1,725	\$42,500 - \$42,999	3,300
\$32,500 - \$32,999	1,675	\$38,000 - \$38,499	1,750	\$43,000 - \$43,499	3,350
\$33,000 - \$33,499	1,700	\$38,500 - \$38,999	1,775	\$43,500 - \$43,999	3,400
\$33,500 - \$33,999	1,725	\$39,000 - \$39,499	1,800	\$44,000 - \$44,499	3,450
\$34,000 - \$34,499	1,750	\$39,500 - \$39,999	1,825	\$44,500 - \$44,999	3,500
\$34,500 - \$34,999	1,775	\$40,000 - \$40,499	1,850	\$45,000 - \$45,499	3,550
\$35,000 - \$35,499	1,800	\$40,500 - \$40,999	1,875	\$45,500 - \$45,999	3,600
\$35,500 - \$35,999	1,825	\$41,000 - \$41,499	1,900	\$46,000 - \$46,499	3,650
\$36,000 - \$36,499	1,850	\$41,500 - \$41,999	1,925	\$46,500 - \$46,999	3,700
\$36,500 - \$36,999	1,875	\$42,000 - \$42,499	1,950	\$47,000 - \$47,499	3,750
\$37,000 - \$37,499	1,900	\$42,500 - \$42,999	1,975	\$47,500 - \$47,999	3,800
\$37,500 - \$37,999	1,925	\$43,000 - \$43,499	2,000	\$48,000 - \$48,499	3,850
\$38,000 - \$38,499	1,950	\$43,500 - \$43,999	2,025	\$48,500 - \$48,999	3,900
\$38,500 - \$38,999	1,975	\$44,000 - \$44,499	2,050	\$49,000 - \$49,499	3,950
\$39,000 - \$39,499	2,000	\$44,500 - \$44,999	2,075	\$49,500 - \$49,999	4,000
\$39,500 - \$39,999	2,025	\$45,000 - \$45,499	2,100	\$50,000 - \$50,499	4,050
\$40,000 - \$40,499	2,050	\$45,500 - \$45,999	2,125	\$50,500 - \$50,999	4,100
\$40,500 - \$40,999	2,075	\$46,000 - \$46,499	2,150	\$51,000 - \$51,499	4,150
\$41,000 - \$41,499	2,100	\$46,500 - \$46,999	2,175	\$51,500 - \$51,999	4,200
\$41,500 - \$41,999	2,125	\$47,000 - \$47,499	2,200	\$52,000 - \$52,499	4,250
\$42,000 - \$42,499	2,150	\$47,500 - \$47,999	2,225	\$52,500 - \$52,999	4,300
\$42,500 - \$42,999	2,175	\$48,000 - \$48,499	2,250	\$53,000 - \$53,499	4,350
\$43,000 - \$43,499	2,200	\$48,500 - \$48,999	2,275	\$53,500 - \$53,999	4,400
\$43,500 - \$43,999	2,225	\$49,000 - \$49,499	2,300	\$54,000 - \$54,499	4,450
\$44,000 - \$44,499	2,250	\$49,500 - \$49,999	2,325	\$54,500 - \$54,999	4,500
\$44,500 - \$44,999	2,275	\$50,000 - \$50,499	2,350	\$55,000 - \$55,499	4,550
\$45,000 - \$45,499	2,300	\$50,500 - \$50,999	2,375	\$55,500 - \$55,999	4,600
\$45,500 - \$45,999	2,325	\$51,000 - \$51,499	2,400	\$56,000 - \$56,499	4,650
\$46,000 - \$46,499	2,350	\$51,500 - \$51,999	2,425	\$56,500 - \$56,999	4,700
\$46,500 - \$46,999	2,375	\$52,000 - \$52,499	2,450	\$57,000 - \$57,499	4,750
\$47,000 - \$47,499	2,400	\$52,500 - \$52,999	2,475	\$57,500 - \$57,999	4,800
\$47,500 - \$47,999	2,425	\$53,000 - \$53,499	2,500	\$58,000 - \$58,499	4,850
\$48,000 - \$48,499	2,450	\$53,500 - \$53,999	2,525	\$58,500 - \$58,999	4,900
\$48,500 - \$48,999	2,475	\$54,000 - \$54,499	2,550	\$59,000 - \$59,499	4,950
\$49,000 - \$49,499	2,500	\$54,500 - \$54,999	2,575	\$59,500 - \$59,999	5,000
\$49,500 - \$49,999	2,525	\$55,000 - \$55,499	2,600	\$60,000 - \$60,499	5,050
\$50,000 - \$50,499	2,550	\$55,500 - \$55,999	2,625	\$60,500 - \$60,999	5,100
\$50,500 - \$50,999	2,575	\$56,000 - \$56,499	2,650	\$61,000 - \$61,499	5,150
\$51,000 - \$51,499	2,600	\$56,500 - \$56,999	2,675	\$61,500 - \$61,999	5,200
\$51,500 - \$51,999	2,625	\$57,000 - \$57,499	2,700	\$62,000 - \$62,499	5,250
\$52,000 - \$52,499	2,650	\$57,500 - \$57,999	2,725	\$62,500 - \$62,999	5,300

BUSINESS CHOICE OFFERS
FLEXIBLE SOLUTIONS FOR YOUR BUSINESS

SALES PERSONNEL SPIFF POINT SCALE

In addition to appealing business consumer offers, Business Choice also benefits Sales Consultants and Sales Managers (or other authorized, designated dealership employees). In your function as one of these dealership personnel, you can earn GM *earn*POWER points for each qualifying Chevrolet Accessories claim submitted within the 2018 BUSINESS CHOICE program, based on the MSRP dollar amounts you sell.

2017-18 SALES PERSONNEL SPIFF POINT SCALE (BASED ON TOTAL PARTS MSRP)

SILVERADO 1500/COLORADO/EXPRESS (PASSENGER)

Total Parts MSRP	Sales Consultant	Sales Manager
\$850–\$1,099	25	10
\$1,100–\$1,499	50	25
\$1,500–\$1,999	125	75
\$2,000 & Up	175	100

SILVERADO 2500HD/3500HD/EXPRESS (CARGO)

Total Parts MSRP	Sales Consultant	Sales Manager
\$1,350–\$1,599	25	10
\$1,600–\$1,999	50	25
\$2,000–\$2,499	125	75
\$2,500 & Up	175	100

CITY EXPRESS

Total Parts MSRP	Sales Consultant	Sales Manager
\$500–\$600	25	10
\$601–\$700	50	25
\$701–\$800	125	75
\$801 & Up	175	100



HOME

ABOUT THIS GUIDE

PROGRAM OVERVIEW

SALES PERSONNEL
SPIFF POINT SCALE

ELIGIBLE ACCESSORIES

Bed Products

Exterior Cargo Management

Interior Cargo Management

Electronics

Exterior

Interior

Performance

Security and Protection

Trailer

RECOMMENDED PACKAGES

BUSINESS CHOICE PORTAL



ACCESSORIES

BUSINESS CHOICE OFFERS
FLEXIBLE SOLUTIONS FOR YOUR BUSINESS

ELIGIBLE ACCESSORIES

A wide range of accessories is available for commercial customers to choose from, and you can use this section to help them imagine the possibilities for accessorizing their truck or van.

To print the comprehensive list of Eligible Accessories categories and accessories listings, visit:
AIC > Sales/Marketing > Programs > Business Choice > Business Choice Admin Message >
2018 Business Choice List of Eligible Accessories.



HOME

ABOUT THIS GUIDE

PROGRAM OVERVIEW

SALES PERSONNEL
SPIFF POINT SCALE

ELIGIBLE ACCESSORIES

► Bed Products

Exterior Cargo Management

Interior Cargo Management

Electronics

Exterior

Interior

Performance

Security and Protection

Trailer

RECOMMENDED PACKAGES

BUSINESS CHOICE PORTAL



ACCESSORIES

BED PRODUCTS — TOP SELLERS

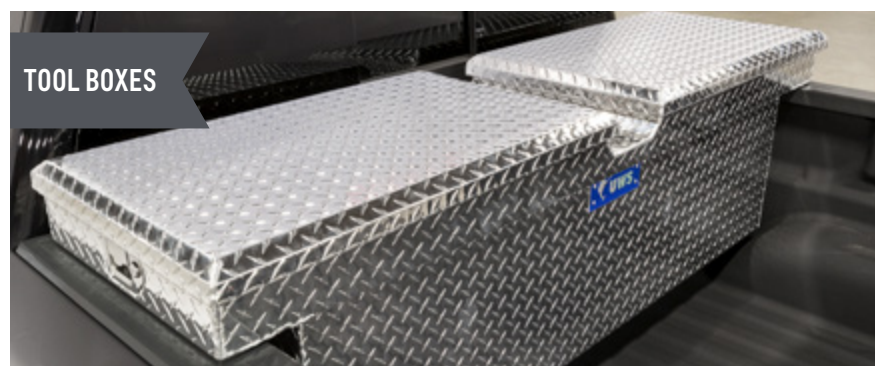
TONNEAU
COVERS



BED
DIVIDERS



TOOL BOXES

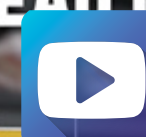


STORAGE
SOLUTIONS



SEE THE FULL LINE OF CHEVROLET
TONNEAU COVERS HERE:

TONNEAU COVERS



ACCESSORIES

LEARN MORE ABOUT TONNEAU COVERS ON AIC:

AIC > Sales/Marketing > Dealer Marketing Material >
Chevrolet > Colorado Tonneau Covers Sell Sheet.pdf

AIC > Sales/Marketing > Dealer Marketing Material >
Chevrolet > Silverado Tonneau Covers Sell Sheet.pdf

OTHER ELIGIBLE BED PRODUCTS

- Bed Extenders
- Bed Lighting
- Bed Nets
- Bed Storage System
- Bed Protection — Mats, Liners and Carpet
- Bed Rails
- Bed Rugs
- Cargo Bed Tie-Down Rings and Push-Up Tie-Down
- Cargo Bed Divider
- Sliding Bed Drawer
- Tailgate Liners

Most Chevrolet Parts and Accessories sold and installed on a Chevrolet vehicle by a Chevrolet Dealer or a Chevrolet-approved Accessory Distributor/Installer (ADI) before delivery to the customer are covered under the applicable portion (Bumper-to-Bumper, Powertrain, etc.) of the New Vehicle Limited Warranty. If Chevrolet Accessories are installed after vehicle delivery, or are replaced under the New Vehicle Limited Warranty, they will be covered, parts and labor, for the longer of the following: a) 12 months/12,000 miles (whichever comes first), or b) the balance of the applicable portion of the New Vehicle Limited Warranty. Chevrolet Parts sold over the counter, or those not requiring installation, will continue to receive the standard GM Dealer Parts Warranty of 12 months from the date of purchase, parts only, regardless of miles. Does not apply to Associated Accessories. See your dealer for details.

Some vehicles are shown with equipment from an independent supplier. GM Licensed and Associated Accessories are covered under the accessory-specific manufacturer's warranty and are not warranted by GM or its dealers. GM is not responsible for the safety or quality of independent supplier alterations.

[HOME](#)[ABOUT THIS GUIDE](#)[PROGRAM OVERVIEW](#)[SALES PERSONNEL
SPIFF POINT SCALE](#)[ELIGIBLE ACCESSORIES](#)[Bed Products](#)[► Exterior Cargo Management](#)[Interior Cargo Management](#)[Electronics](#)[Exterior](#)[Interior](#)[Performance](#)[Security and Protection](#)[Trailer](#)[RECOMMENDED PACKAGES](#)[BUSINESS CHOICE PORTAL](#)**ACCESSORIES**

EXTERIOR CARGO MANAGEMENT — TOP SELLERS

**LADDER
RACKS****UTILITY RACK
STANCHIONS****BIKE
CARRIERS**

OTHER ELIGIBLE EXTERIOR CARGO MANAGEMENT PRODUCTS

- GearOn™ — Bed Dividers, Tiered Storage Cross Rails and Utility Rack Systems
- Bed Rails
- Bed Nets
- Bed Bags
- Ladder Rack Systems
- Roof Rack Kits and Packages
- Utility Racks

Most Chevrolet Parts and Accessories sold and installed on a Chevrolet vehicle by a Chevrolet Dealer or a Chevrolet-approved Accessory Distributor/Installer (ADI) before delivery to the customer are covered under the applicable portion (Bumper-to-Bumper, Powertrain, etc.) of the New Vehicle Limited Warranty. If Chevrolet Accessories are installed after vehicle delivery, or are replaced under the New Vehicle Limited Warranty, they will be covered, parts and labor, for the longer of the following: a) 12 months/12,000 miles (whichever comes first), or b) the balance of the applicable portion of the New Vehicle Limited Warranty. Chevrolet Parts sold over the counter, or those not requiring installation, will continue to receive the standard GM Dealer Parts Warranty of 12 months from the date of purchase, parts only, regardless of miles. Does not apply to Associated Accessories. See your dealer for details.

Some vehicles are shown with equipment from an independent supplier. GM Licensed and Associated Accessories are covered under the accessory-specific manufacturer's warranty and are not warranted by GM or its dealers. GM is not responsible for the safety or quality of independent supplier alterations.

HOME

ABOUT THIS GUIDE

PROGRAM OVERVIEW

SALES PERSONNEL
SPIFF POINT SCALE

ELIGIBLE ACCESSORIES

Bed Products

Exterior Cargo Management

► Interior Cargo Management

Electronics

Exterior

Interior

Performance

Security and Protection

Trailer

RECOMMENDED PACKAGES

BUSINESS CHOICE PORTAL



ACCESSORIES

INTERIOR CARGO MANAGEMENT — TOP SELLERS



OTHER ELIGIBLE INTERIOR CARGO MANAGEMENT PRODUCTS

- Front Center Console Tote Inserts
- Front Center Console Organizer Trays

Most Chevrolet Parts and Accessories sold and installed on a Chevrolet vehicle by a Chevrolet Dealer or a Chevrolet-approved Accessory Distributor/Installer (ADI) before delivery to the customer are covered under the applicable portion (Bumper-to-Bumper, Powertrain, etc.) of the New Vehicle Limited Warranty. If Chevrolet Accessories are installed after vehicle delivery, or are replaced under the New Vehicle Limited Warranty, they will be covered, parts and labor, for the longer of the following: a) 12 months/12,000 miles (whichever comes first), or b) the balance of the applicable portion of the New Vehicle Limited Warranty. Chevrolet Parts sold over the counter, or those not requiring installation, will continue to receive the standard GM Dealer Parts Warranty of 12 months from the date of purchase, parts only, regardless of miles. Does not apply to Associated Accessories. See your dealer for details.

Some vehicles are shown with equipment from an independent supplier. GM Licensed and Associated Accessories are covered under the accessory-specific manufacturer's warranty and are not warranted by GM or its dealers. GM is not responsible for the safety or quality of independent supplier alterations.

HOME

ABOUT THIS GUIDE

PROGRAM OVERVIEW

SALES PERSONNEL
SPIFF POINT SCALE

ELIGIBLE ACCESSORIES

Bed Products

Exterior Cargo Management

Interior Cargo Management

► Electronics

Exterior

Interior

Performance

Security and Protection

Trailer

RECOMMENDED PACKAGES

BUSINESS CHOICE PORTAL



ACCESSORIES

ELECTRONICS — TOP SELLERS

REMOTE
START KITS



BATTERY
JUMP
STARTER



BLUETOOTH®
SPEAKER



KEYLESS
ENTRY



OTHER ELIGIBLE ELECTRONICS PRODUCTS

- Audio Systems
- Navigation Radio Cables

Most Chevrolet Parts and Accessories sold and installed on a Chevrolet vehicle by a Chevrolet Dealer or a Chevrolet-approved Accessory Distributor/Installer (ADI) before delivery to the customer are covered under the applicable portion (Bumper-to-Bumper, Powertrain, etc.) of the New Vehicle Limited Warranty. If Chevrolet Accessories are installed after vehicle delivery, or are replaced under the New Vehicle Limited Warranty, they will be covered, parts and labor, for the longer of the following: a) 12 months/12,000 miles (whichever comes first), or b) the balance of the applicable portion of the New Vehicle Limited Warranty. Chevrolet Parts sold over the counter, or those not requiring installation, will continue to receive the standard GM Dealer Parts Warranty of 12 months from the date of purchase, parts only, regardless of miles. Does not apply to Associated Accessories. See your dealer for details.

Some vehicles are shown with equipment from an independent supplier. GM Licensed and Associated Accessories are covered under the accessory-specific manufacturer's warranty and are not warranted by GM or its dealers. GM is not responsible for the safety or quality of independent supplier alterations.

- Bed Products
- Exterior Cargo Management
- Interior Cargo Management
- Electronics
- Exterior
- Interior
- Performance
- Security and Protection
- Trailer

EXTERIOR — TOP SELLERS



OTHER ELIGIBLE EXTERIOR PRODUCTS

- Emblems
- Fog Lamps
- Grille and Grille Packages
- Hood and Side Window Weather Deflectors
- License Plate Holders
- Molded Hood Protectors
- Sport Bars and Front Roof-Mounted Off-Road Lamps
- Underbody Shields
- Wheelhouse Liners

LEARN MORE ABOUT ASSIST STEPS ON AIC:
[AIC > Sales/Marketing > Dealer Marketing Material > Chevrolet > Chevrolet Assist Step One Pager.pdf](#)

Most Chevrolet Parts and Accessories sold and installed on a Chevrolet vehicle by a Chevrolet Dealer or a Chevrolet-approved Accessory Distributor/Installer (ADI) before delivery to the customer are covered under the applicable portion (Bumper-to-Bumper, Powertrain, etc.) of the New Vehicle Limited Warranty. If Chevrolet Accessories are installed after vehicle delivery, or are replaced under the New Vehicle Limited Warranty, they will be covered, parts and labor, for the longer of the following: a) 12 months/12,000 miles (whichever comes first), or b) the balance of the applicable portion of the New Vehicle Limited Warranty. Chevrolet Parts sold over the counter, or those not requiring installation, will continue to receive the standard GM Dealer Parts Warranty of 12 months from the date of purchase, parts only, regardless of miles. Does not apply to Associated Accessories. See your dealer for details.

Some vehicles are shown with equipment from an independent supplier. GM Licensed and Associated Accessories are covered under the accessory-specific manufacturer's warranty and are not warranted by GM or its dealers. GM is not responsible for the safety or quality of independent supplier alterations.

HOME

ABOUT THIS GUIDE

PROGRAM OVERVIEW

SALES PERSONNEL
SPIFF POINT SCALE

ELIGIBLE ACCESSORIES

Bed Products

Exterior Cargo Management

Interior Cargo Management

Electronics

Exterior

► Interior

Performance

Security and Protection

Trailer

RECOMMENDED PACKAGES

BUSINESS CHOICE PORTAL



ACCESSORIES

INTERIOR — TOP SELLERS



- OTHER ELIGIBLE INTERIOR PRODUCTS
- Assist Handles
 - Door Sill Plates — Non-Illuminated
 - Premium All-Weather Floor Mats
 - Seat Covers
 - Smoker's Packages
 - Sunshade Packages
 - Vinyl Floor Mats

Most Chevrolet Parts and Accessories sold and installed on a Chevrolet vehicle by a Chevrolet Dealer or a Chevrolet-approved Accessory Distributor/Installer (ADI) before delivery to the customer are covered under the applicable portion (Bumper-to-Bumper, Powertrain, etc.) of the New Vehicle Limited Warranty. If Chevrolet Accessories are installed after vehicle delivery, or are replaced under the New Vehicle Limited Warranty, they will be covered, parts and labor, for the longer of the following: a) 12 months/12,000 miles (whichever comes first), or b) the balance of the applicable portion of the New Vehicle Limited Warranty. Chevrolet Parts sold over the counter, or those not requiring installation, will continue to receive the standard GM Dealer Parts Warranty of 12 months from the date of purchase, parts only, regardless of miles. Does not apply to Associated Accessories. See your dealer for details.

Some vehicles are shown with equipment from an independent supplier. GM Licensed and Associated Accessories are covered under the accessory-specific manufacturer's warranty and are not warranted by GM or its dealers. GM is not responsible for the safety or quality of independent supplier alterations.

HOME

ABOUT THIS GUIDE

PROGRAM OVERVIEW

SALES PERSONNEL
SPIFF POINT SCALE

ELIGIBLE ACCESSORIES

Bed Products

Exterior Cargo Management

Interior Cargo Management

Electronics

Exterior

Interior

► Performance

Security and Protection

Trailer

RECOMMENDED PACKAGES

BUSINESS CHOICE PORTAL



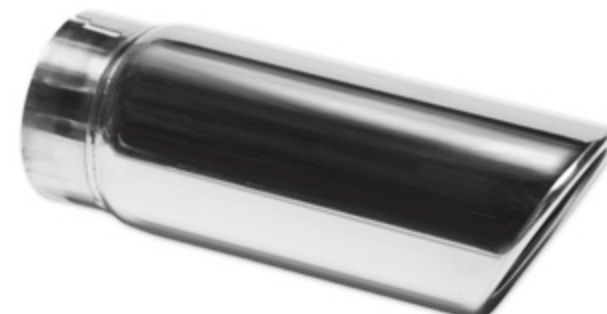
ACCESSORIES

PERFORMANCE — TOP SELLERS

AIR INTAKE
SYSTEM



EXHAUST
TIPS



EXHAUST
UPGRADE
SYSTEM



BRAKE
UPGRADE
SYSTEM



OTHER ELIGIBLE PERFORMANCE PRODUCTS

- Performance Exhaust Systems, Upgrades and Tips

Most Chevrolet Parts and Accessories sold and installed on a Chevrolet vehicle by a Chevrolet Dealer or a Chevrolet-approved Accessory Distributor/Installer (ADI) before delivery to the customer are covered under the applicable portion (Bumper-to-Bumper, Powertrain, etc.) of the New Vehicle Limited Warranty. If Chevrolet Accessories are installed after vehicle delivery, or are replaced under the New Vehicle Limited Warranty, they will be covered, parts and labor, for the longer of the following: a) 12 months/12,000 miles (whichever comes first), or b) the balance of the applicable portion of the New Vehicle Limited Warranty. Chevrolet Parts sold over the counter, or those not requiring installation, will continue to receive the standard GM Dealer Parts Warranty of 12 months from the date of purchase, parts only, regardless of miles. Does not apply to Associated Accessories. See your dealer for details.

Some vehicles are shown with equipment from an independent supplier. GM Licensed and Associated Accessories are covered under the accessory-specific manufacturer's warranty and are not warranted by GM or its dealers. GM is not responsible for the safety or quality of independent supplier alterations.

HOME

ABOUT THIS GUIDE

PROGRAM OVERVIEW

SALES PERSONNEL
SPIFF POINT SCALE

ELIGIBLE ACCESSORIES

Bed Products

Exterior Cargo Management

Interior Cargo Management

Electronics

Exterior

Interior

Performance

► Security and Protection

Trailer

RECOMMENDED PACKAGES

BUSINESS CHOICE PORTAL



ACCESSORIES

SECURITY AND PROTECTION — TOP SELLERS

REFLECTIVE
TRIANGLE



FIRST AID
KITS



WHEEL LOCK
KITS



OTHER ELIGIBLE SECURITY AND PROTECTION PRODUCTS

- Fire Extinguisher — Cargo Vans Only
- Highway Safety Kits
- Roadside Assistance Packages

Most Chevrolet Parts and Accessories sold and installed on a Chevrolet vehicle by a Chevrolet Dealer or a Chevrolet-approved Accessory Distributor/Installer (ADI) before delivery to the customer are covered under the applicable portion (Bumper-to-Bumper, Powertrain, etc.) of the New Vehicle Limited Warranty. If Chevrolet Accessories are installed after vehicle delivery, or are replaced under the New Vehicle Limited Warranty, they will be covered, parts and labor, for the longer of the following: a) 12 months/12,000 miles (whichever comes first), or b) the balance of the applicable portion of the New Vehicle Limited Warranty. Chevrolet Parts sold over the counter, or those not requiring installation, will continue to receive the standard GM Dealer Parts Warranty of 12 months from the date of purchase, parts only, regardless of miles. Does not apply to Associated Accessories. See your dealer for details.

HOME

ABOUT THIS GUIDE

PROGRAM OVERVIEW

SALES PERSONNEL

SPIFF POINT SCALE

ELIGIBLE ACCESSORIES

Bed Products

Exterior Cargo Management

Interior Cargo Management

Electronics

Exterior

Interior

Performance

Security and Protection

► Trailing

RECOMMENDED PACKAGES

BUSINESS CHOICE PORTAL



ACCESSORIES

TRAILERING — TOP SELLERS



TRAILERING
CAMERA
SYSTEM



5TH WHEEL
HITCHES



SEE MORE ABOUT THE
TRAILERING CAMERA SYSTEM HERE:



OTHER ELIGIBLE TRAILERING PRODUCTS

- 5th-Wheel Adapter Kits
- 5th-Wheel Hitch Packages
- 7-Way Electrical Extensions
- Ball Mounts
- Brake Controller Packages
- Gooseneck Packages
- Hitch Ball Mount Assemblies
- Hitch Covers
- Hitch Trailing Packages
- Locking Hitch Pins
- Pintle Hitches
- Recovery Hooks
- Tow Balls
- Trailing Locks
- Trailing Mirrors
- Trailer Wiring Adapters

Most Chevrolet Parts and Accessories sold and installed on a Chevrolet vehicle by a Chevrolet Dealer or a Chevrolet-approved Accessory Distributor/Installer (ADI) before delivery to the customer are covered under the applicable portion (Bumper-to-Bumper, Powertrain, etc.) of the New Vehicle Limited Warranty. If Chevrolet Accessories are installed after vehicle delivery, or are replaced under the New Vehicle Limited Warranty, they will be covered, parts and labor, for the longer of the following: a) 12 months/12,000 miles (whichever comes first), or b) the balance of the applicable portion of the New Vehicle Limited Warranty. Chevrolet Parts sold over the counter, or those not requiring installation, will continue to receive the standard GM Dealer Parts Warranty of 12 months from the date of purchase, parts only, regardless of miles. Does not apply to Associated Accessories. See your dealer for details.

Some vehicles are shown with equipment from an independent supplier. GM Licensed and Associated Accessories are covered under the accessory-specific manufacturer's warranty and are not warranted by GM or its dealers. GM is not responsible for the safety or quality of independent supplier alterations.

1 Non-GM warranty. Limited warranty by EchoMaster®, 3 years/36,000 miles. For more information, contact your dealer.

- Associated Accessory. Non-GM part.

BUSINESS CHOICE OFFERS
FLEXIBLE SOLUTIONS FOR YOUR BUSINESS

CHEVROLET BUSINESS CHOICE RECOMMENDED PACKAGES

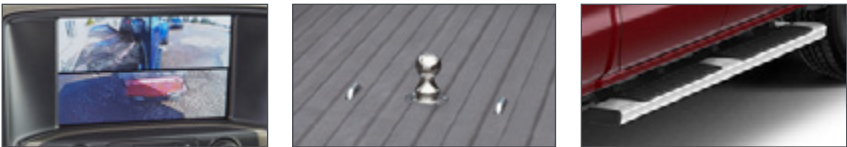
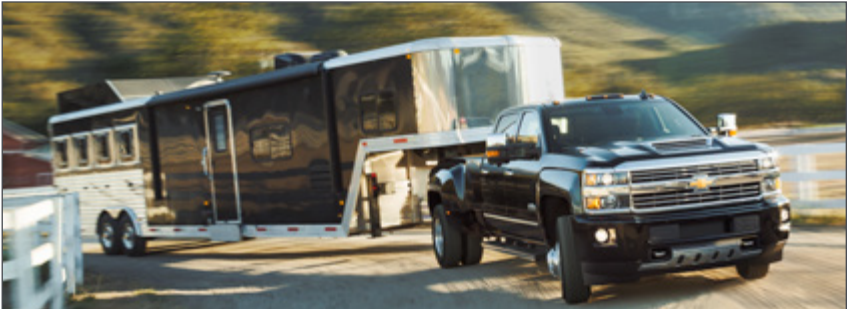
To help customers visualize an accessorized work vehicle, present a suggested package, complete with pricing and net cost after the allowance.

**SUGGESTED PACKAGE EXAMPLES
FOR SILVERADO 1500**



PART #	ACCESSORY	MSRP ¹
19299111	Half Ladder Rack by Thule® TracRac ²	\$319
23221572	Bedliner Package for Standard Bed	\$305
19170990	Chevrolet Accessories Stationary Tool Box	\$535
TOTAL		\$1,159
Less BUSINESS CHOICE Chevrolet Accessories Cash Allowance ^{3,4}		(-\$400)
Net After Allowance⁷		\$759

**SUGGESTED PACKAGE EXAMPLES
FOR SILVERADO 2500/3500 HD**



PART #	ACCESSORY	MSRP ¹
19353504	Trairling Camera System by EchoMaster® ⁵	\$999
19353984	EZr Under-Bed Gooseneck Hitch by CURT™ Group ⁶	\$499
84106513	6-Inch Rectangular Assist Steps in Chrome	\$725
TOTAL		\$2,223
Less BUSINESS CHOICE Chevrolet Accessories Cash Allowance ^{3,4}		(-\$1,000)
Net After Allowance⁷		\$1,223

¹ Manufacturer's Suggested Retail Price. Tax and installation extra. See dealer for details.

² Non-GM warranty. Limited warranty by Thule® 3 years/36,000 miles. For more information, contact your dealer.

³ For Colorado, Silverado 1500, Silverado 2500HD, Silverado 3500HD, Express Passenger Van and City Express Van: Cash Allowance applies to eligible Chevrolet commercial accessories only. For Express Cargo Van, (i) Cash Allowance may be applied to eligible Chevrolet commercial accessories, a combination of eligible Chevrolet commercial accessories and eligible commercial upfitter additions, including labor and installation associated with upfitter additions only, and (ii) Customers must spend at least \$500 to be eligible for Cash Allowance. Not valid with certain other offers. See your Chevrolet Dealer for complete Program requirements. Program is valid from January 3, 2018–January 2, 2019. Take delivery by 1/2/2019.

⁴ Most Chevrolet Parts and Accessories sold and installed on a Chevrolet vehicle by a Chevrolet Dealer or a Chevrolet-approved Accessory Distributor/Installer (ADI) before delivery to the customer are covered under the applicable portion (Bumper-to-Bumper, Powertrain, etc.) of the New Vehicle Limited Warranty. If Chevrolet Accessories are installed after vehicle delivery, or are replaced under the New Vehicle Limited Warranty, they will be covered, parts and labor, for the longer of the following: a) 12 months/12,000 miles (whichever comes first), or b) the balance of the applicable portion of the New Vehicle Limited Warranty. Chevrolet Parts sold over the counter, or those not requiring installation, will continue to receive the standard GM Dealer Parts Warranty of 12 months from the date of purchase, parts only, regardless of miles. Does not apply to Associated Accessories. See your dealer for details. Some vehicles are shown with equipment from an independent supplier. GM Licensed and Associated Accessories are covered under the accessory-specific manufacturer's warranty and are not warranted by GM or its dealers. GM is not responsible for the safety or quality of independent supplier alterations.

⁵ Non-GM warranty. Limited warranty by EchoMaster® 3 years/36,000 miles. For more information, contact your dealer.

⁶ Non-GM warranty. Limited warranty by CURT™ Group, manufacturer's limited lifetime warranty. For more information, contact your dealer.

⁷ Prices do not include tax or installation costs.

– Associated Accessory. Non-GM part.

Pictured gear and supplies not included. Please see your dealer for details.



HOME

ABOUT THIS GUIDE

PROGRAM OVERVIEW

SALES PERSONNEL
SPIFF POINT SCALE

ELIGIBLE ACCESSORIES

RECOMMENDED PACKAGES

BUSINESS CHOICE PORTAL

VIN Lookup Enhancement

Selling Tool Enhancements

Using the New Business Choice
Portal to Submit a Claim



ACCESSORIES

BUSINESS CHOICE OFFERS
FLEXIBLE SOLUTIONS FOR YOUR BUSINESS

BUSINESS CHOICE PORTAL

We know you're busy — so we're making your requests a reality to improve your overall experience on the Business Choice Portal. New Business Choice Portal features include:

- A Part Lookup Tool and Submit Claim tab that recognize the last 8 digits of a VIN
- Expanded Accessory Part Lookup Tool features
- Downloadable PDF estimates on the Part Lookup Tool

You can access and bookmark the Business Choice Portal via Globalconnect at <https://dealer.autopartners.net/portal/us/Pages/default.aspx>





BUSINESS CHOICE PORTAL

VIN LOOKUP ENHANCEMENT

1. Part Lookup Tool and Submit Claim tab now recognize the last 8 digits of a VIN

Entering the last 8 digits of a VIN will generate a search and display the full VIN(s) in a drop-down menu. Select the desired VIN by using the **Tab** and **Enter** keys. A user interface enhancement that allows selecting the menu item with a mouse click is coming soon.

GM Accessories Part Look-up by VIN

This tool allows you to view all eligible Business Choice Accessories.

The VIN Look Up tool does not place an ADI order or submit a claim. To submit a claim, click on the highlighted Submit Claim tab above.

Search by VIN:

2. The Accessory Part Lookup Tool:

- Now features search by Part Number
- Includes Discontinued and Superseding parts with part search
- Offers a new worksheet for quoting installation costs to customers
- Features a new worksheet function with part information

Search by VIN:

Search by Part Number:

Hourly Labor Rate for Installation Estimate: \$

Select part(s) before printing:

Assist Steps

QTY: <input type="text" value="1"/>	Part Number: 84106503	Part Status: Available	MSRP: \$600.00	Estimated Install Time: 0.5 Hours
8-Inch Rectangular Assist Steps - Chrome, For Regular Cab				
Discontinued and Superseding Parts				
QTY: <input type="text" value="1"/>	Part Number: 2292525	Part Status: Discontinued	MSRP: \$500.00	Estimated Install Time: 0.6 Hours
4-Inch Round Assist Steps in Black for Regular Cab Models with Diesel Engine				

Search by VIN:

Search by Part Number:

Hourly Labor Rate for Installation Estimate: \$

Select part(s) before printing:

Assist Steps

QTY: <input type="text" value="1"/>	Part Number: 84106503	Part Status: Available	MSRP: \$600.00	Estimated Install Time: 0.5 Hours
-------------------------------------	-----------------------	------------------------	----------------	-----------------------------------

The list of accessories displayed in the tool is now precisely the same as the list displayed on the **Submit Claim** tab. Instead of attempting to submit a claim to view superseded or discontinued parts, use the tool to search and validate parts. The increased functionality now allows to confirm all eligible part numbers, including superseded or discontinued.

BUSINESS CHOICE PORTAL

SELLING TOOL ENHANCEMENTS

Download PDF estimates for vehicle customers and Parts Department personnel on the Part Lookup Tool

New to this tool is the option to enter an “Hourly Labor Rate for Installation Estimate.” This labor rate and the Estimated Install Time are calculated together for reference in the new “Customer Estimate” and “Parts Estimate” buttons. These buttons download PDFs with a list of the selected parts, and can be printed for the dealership’s Parts Department or emailed to a customer when deciding on accessories.

BUSINESS CHOICE OFFERS
Flexible Solutions for Your Business.

Customer Estimate - Business Choice Accessories

Date:11/19/17 5:32 PM

Prepared For:

Dealership Information

Dealership Name:BARTON CHEVROLET CADILLAC

BAC:111117

Prepared By:

Vehicle Information

VIN:1GC0KVEYXHZ0003EX

Series Name:2500HD Silverado: LWB, 4WD, Reg Cab Pickup

Model Number:CK25903

Model Year:2017

Business Choice Allowance:\$1000 GM Accessories Cash

Accessory Information

#	Part Number	Part Qty	Part Category	Part Description	MSRP	Estimated Installation Cost
1	19332287	2	Tool Box	Tool Box - IBP UWSB Side Mount - Associated Accessories	\$ 558.00	\$ 100.00
2	84000662	1	Bed Trailing	Gooseneck Hitch Package	\$ 295.00	\$ 10.00
3	84039116	1	Floor Mats	Premium All-Weather Front Floor Mats, Dune With Gray Bowtie Logo	\$ 85.00	\$ 0.00
4	84106503	1	Assist Steps	6-Inch Rectangular Assist Steps - Chrome, For Regular Cab	\$ 600.00	\$ 50.00
TOTAL					\$ 1,538.00	\$ 160.00

Note: All GM Accessories Installed at the dealership will carry the same warranty as the vehicle. Any accessories installed by the customer will carry a 12 month / 12,000 mile warranty.

BUSINESS CHOICE OFFERS
Flexible Solutions for Your Business.

Parts Estimate - Business Choice Accessories

Date:11/19/17 5:34 PM

Dealership Name:BARTON CHEVROLET CADILLAC

BAC:111117

Prepared By:

Vehicle Information

VIN:1GC0KVEYXHZ0003EX

Series Name:2500HD Silverado: LWB, 4WD, Reg Cab Pickup

Model Number:CK25903

Model Year:2017

Business Choice Allowance:\$1000 GM Accessories Cash

Salesperson Spiff Amount Eligible:\$25.00

Hourly Labor Rate for Estimate:\$ 100.00

Accessory Information

#	Part Number	Part Qty	Part Category	Part Description	MSRP	Install Time (Reference Only)
1	19332287	2	Tool Box	Tool Box - IBP UWSB Side Mount - Associated Accessories	\$ 558.00	1.0
2	84000662	1	Bed Trailing	Gooseneck Hitch Package	\$ 295.00	0.1
3	84039116	1	Floor Mats	Premium All-Weather Front Floor Mats, Dune With Gray Bowtie Logo	\$ 85.00	0.0
4	84106503	1	Assist Steps	6-Inch Rectangular Assist Steps - Chrome, For Regular Cab	\$ 600.00	0.5
TOTAL					\$ 1,538.00	1.6

BUSINESS CHOICE PORTAL

USING THE NEW BUSINESS CHOICE PORTAL TO SUBMIT A CLAIM

GATHER YOUR INFORMATION AND DOCUMENTS

To make your claim submission process easier, please have the following information and documents ready before you begin:

- Customer name and proof of business ownership documentation
- VIN and delivery date
- Business Choice Offer and incentive amount as shown on the Buyer’s Order or Incentive Acknowledgement Form
- For Accessory Cash Allowance, a list of accessory part numbers
- For Upfit Cash Allowance, have the upfitter invoice

SUBMITTING THE CLAIM

- To begin, go the Business Choice Portal in GlobalConnect to access the Business Choice Portal app. Follow the steps on each screen to complete the claims submission
- Review the submission for accuracy and click Submit Claim. The system will generate a Confirmation Claim Form that should be printed and then signed by both the Dealer and customer. Retain a copy in the deal jacket for audit purposes

DOCUMENT CHECKLIST FOR THE DEAL JACKET			
Use this chart to determine the documents needed to apply for and process Business Choice claims:			
Documentation	Accessories	Upfits	Ship Through
Proof of Business Ownership	X	X (Non-core only)	
Buyer’s Form showing incentive deducted from the price of the vehicle	X	X	
Incentive Acknowledgement Form	X	X	X (New)
Form to Disclose Non-GM Parts		X	X
Repair Order or Upfitter Invoice	X	X	
Submit Claim Form with customer signatures	X	X	
Business Choice Worksheet with customer signatures			X

